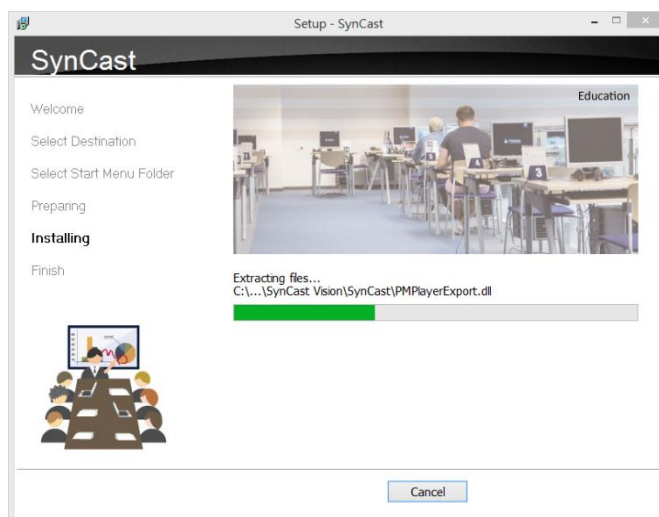
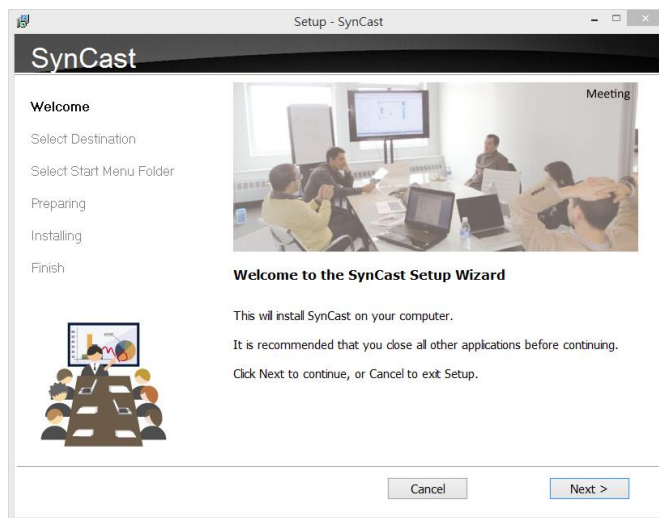
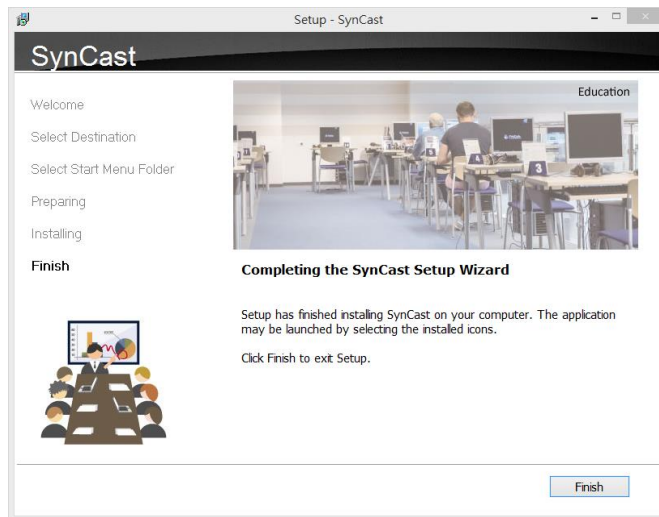


# SynCast Software Transmitter

## Install SynCast software

You can install SynCast application. Go through the steps to complete the software installation.

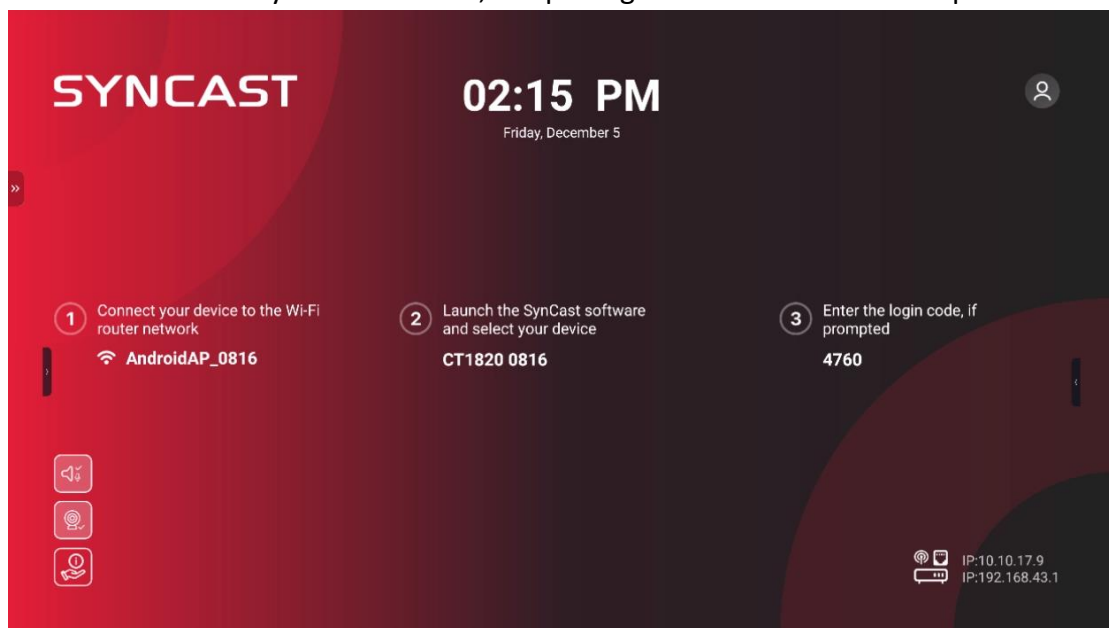




## Launch SynCast software



1. Launch the SynCast software, the pairing wizard window shows up.



2. Pairing the SynCast Display

SynCast client should connect to the same network with the SynCast Display receiver. You can refer to the information on standby screen of SynCast Display receiver.

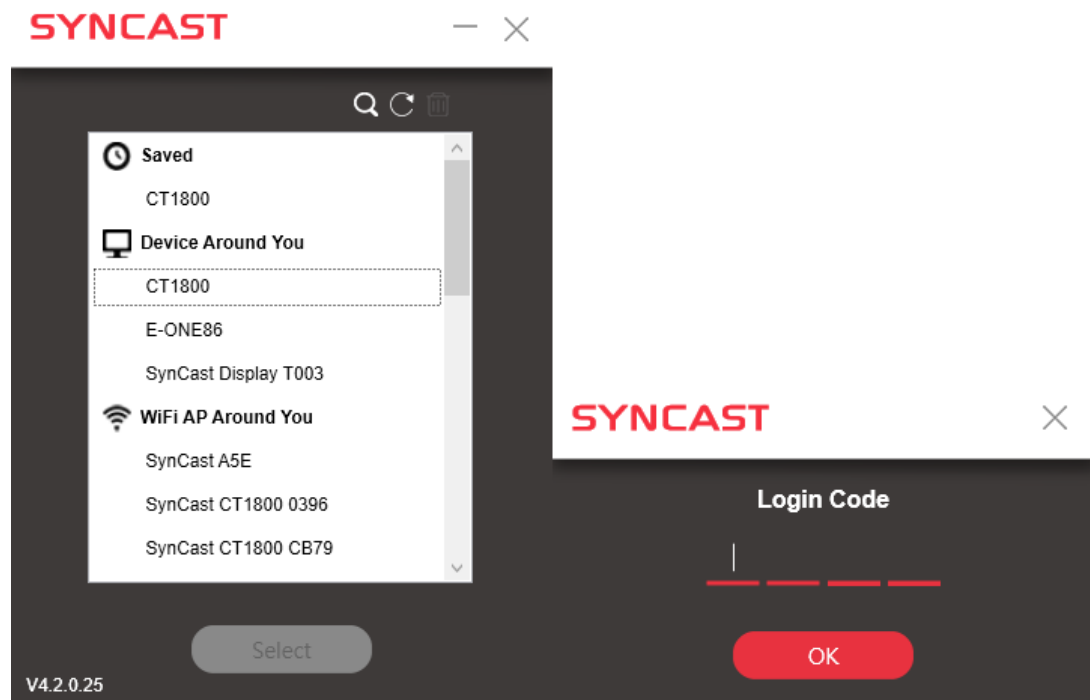
Depending on the connection status, there are 3 types of pairing method.

Type A	Client connects to the router via Wi-Fi SynCast Display connects to the router via Wi-Fi or LAN
Type B	Client connects to the router via LAN SynCast Display connects to the router via LAN or Wi-Fi
Type C	Using Hot Spot of the receiver device platform. Client connects to SynCast Display via Wi-Fi Hot Spot of the receiver device directly.

## General Pairing Steps

When client's device is already connected to the same network with the receiver device. SynCast software can find the receiver device.

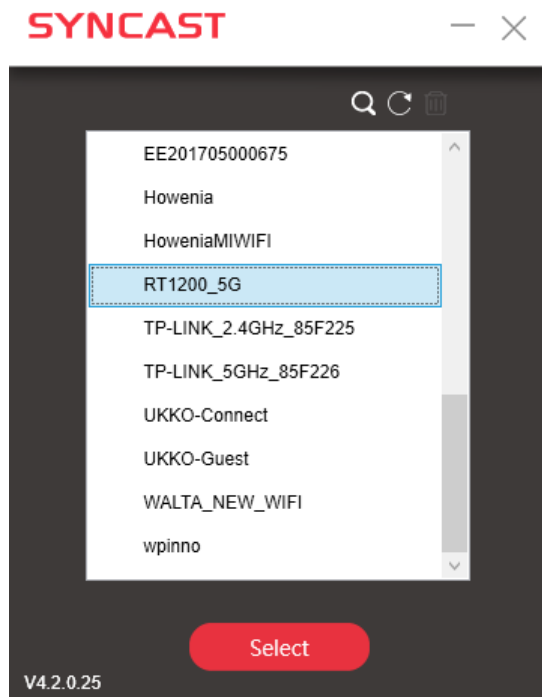
1. Select the correct receiver device which you are going share screen.
2. Input the Login Code. Press "Play" to start sharing screen.



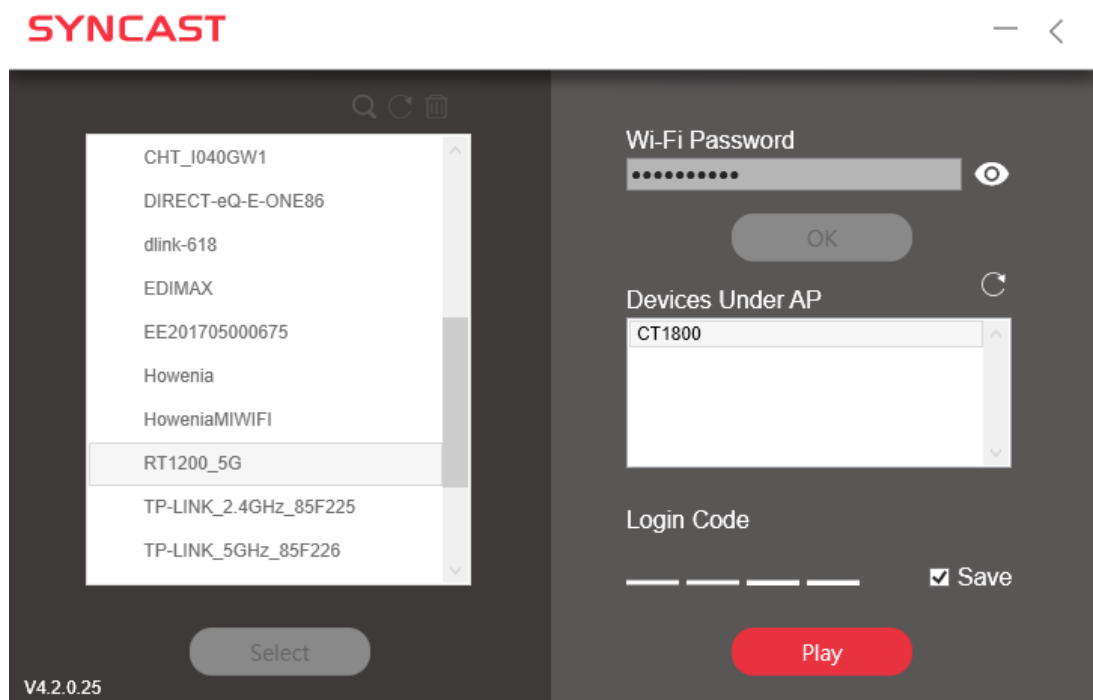
If you cannot find the device directly, here are some guides for different pairing methods.








### Type A: Client connects to the router via Wi-Fi

1. Select the Wi-Fi router and click the “Select” button. The right pane will expand.



2. Input the Wi-Fi password of the router and click “OK”.
3. Select the correct receiver device which you are going share screen.
4. Input the Login Code. Press “Play” to start sharing screen.

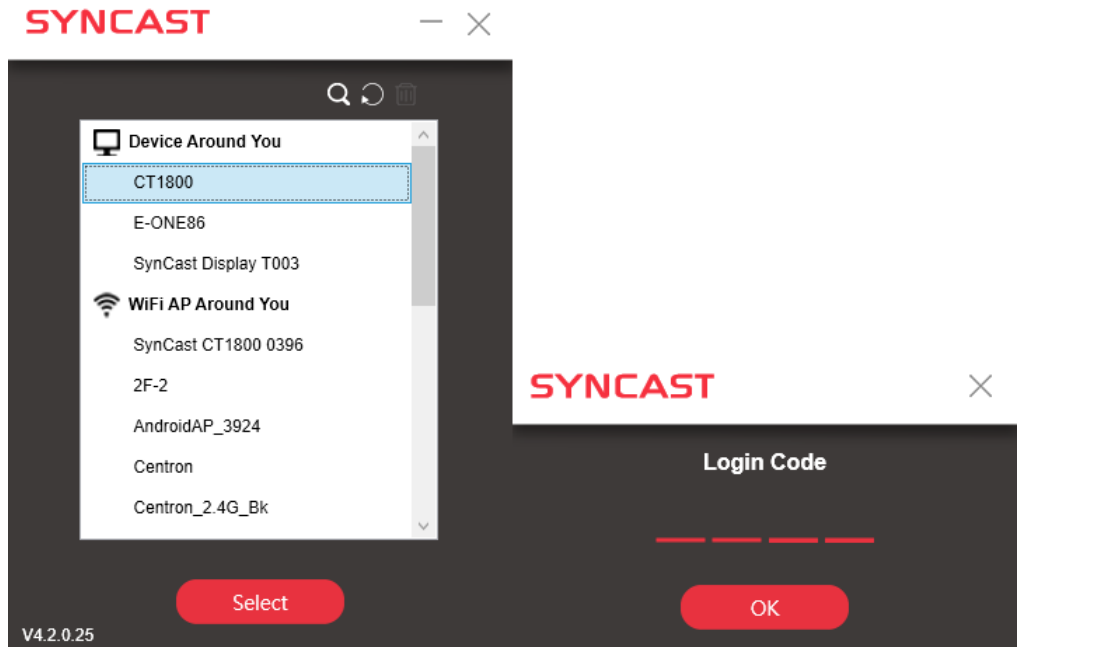


Item	Description
	Device Around You. The SynCast Display receivers with the same network segment will be located here.
	Wi-Fi AP Around You. Select the router you want to connect to. And SynCast Display receivers behind this router will be located.
	Find the receiver by IP.
	Refresh the list if the Wi-Fi router or device if it doesn't appear.
	Select the saved pairing record and discard it.
	Choose the router, click "Select" to connect.
Wi-Fi Password	Input the Wi-Fi password you set in Soft AP mode
Device Under AP	SynCast Display receiver name will be located and shown here.
Login Code	Input the Login Code if you see it on SynCast Display receiver.
Save	Save the pairing record in the client PC.
	Start the screen mirroring.



---

### Type B. Client connects to the router via LAN

1. Select the correct receiver device which you are going share screen.
2. Input the Login Code. Press “OK” to start sharing screen.



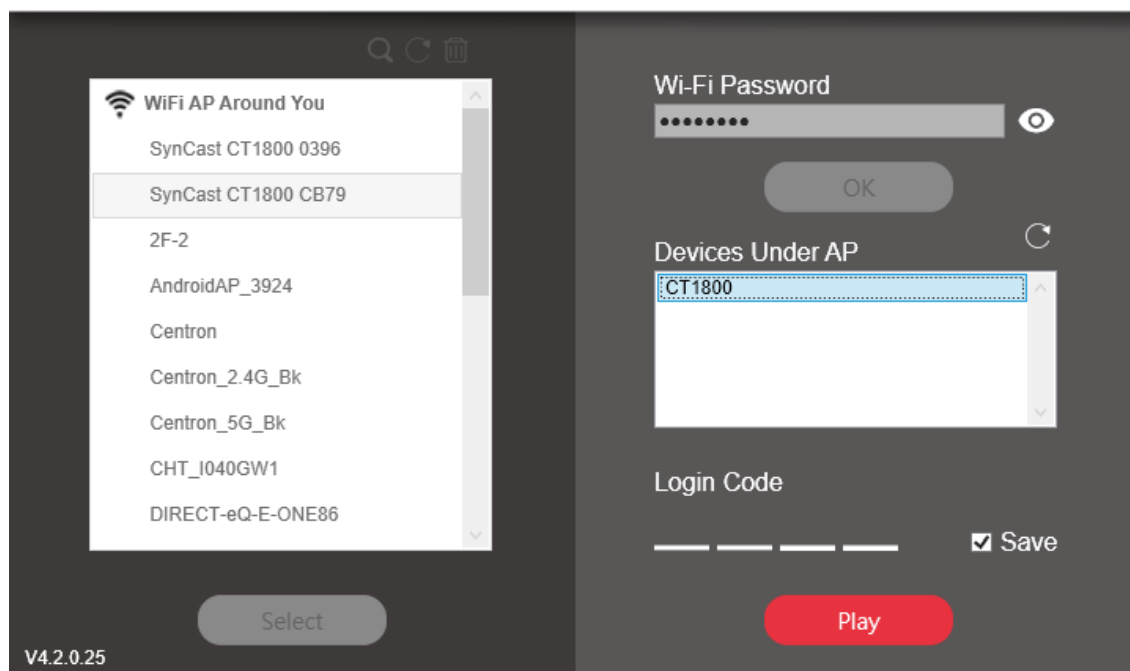
The screenshot shows the SYNCAST application interface. On the left, a panel titled "Device Around You" lists several devices: CT1800 (highlighted), E-ONE86, SynCast Display T003, and a "WiFi AP Around You" section listing SynCast CT1800 0396, 2F-2, AndroidAP\_3924, Centron, and Centron\_2.4G\_Bk. Below this list is a red "Select" button. On the right, a "Login Code" input field with four red dashes and a red "OK" button are visible. The version "V4.2.0.25" is shown in the bottom left corner.

Item	Description
	Device Around You. The SynCast Display receivers with the same network segment will be located here.
	Refresh the Wi-Fi List if the router didn't appear.
Select	Choose the server, click “Select” to connect and start screen mirroring.

※Because the client PC connects to the router via LAN, no pairing record to save.

### Type C. Using Hot Spot of the receiver device platform (Soft AP mode)

1. Select the Hot Spot SSID and click the “Select” button. The right pane will expand.
2. Input the Wi-Fi password, 12345678, of the Hot Spot and click “OK”.
3. Select the correct receiver device which you are going share screen.
4. Input the Login Code. Press “Play” to start sharing screen.

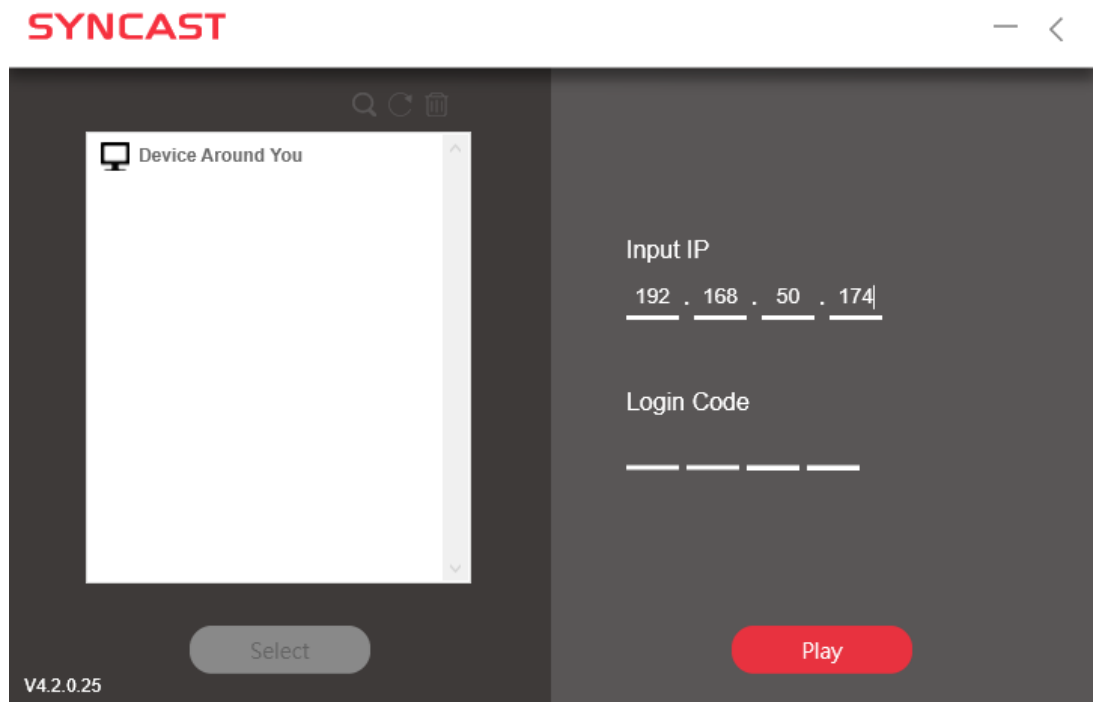



Item	Description
	Device/AP Around You. Select the router you want to connect to. The SynCast Share receiver should be located behind this router.
	Wi-Fi AP Around You. Select the router you want to connect to. And SynCast Display receivers behind this router will be located.
	Find the receiver by IP.
	Refresh the list if the Wi-Fi router or device if it doesn't appear.
	Select the saved pairing record and discard it.
Select	Choose the router, click "Select" to connect.
Wi-Fi Password	Input the Wi-Fi password you set in Soft AP mode
Device Under AP	SynCast Share receiver name will be located and shown here.
Login Code	In put the Login Code if you see it on SynCast Display receiver.
Save	Save the pairing record in the client PC.
Play	Start the screen mirroring.



### Find by IP manually

In some cases, the client's device and the receiver device are under same network but not at the same level. Follow the steps below to find the receiver by IP address manually.


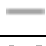
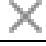














1. Click , the right pane will expand.
2. Input the IP and login code. Press "Play" to start sharing screen.  
✖Because the client PC connects to the SynCast Display via IP connection, no pairing record to save.

## SynCast Windows User Interface

### Basic Mode — Main Panel



Item	Description
	Click to show the Version / Server IP / Server Name information
	Minimize the SynCast control panel
	Close the SynCast program
	Launch the Document Share
	Launch the Annotator
	Launch the SynCast setting
	Launch the Conference Mode
	Launch the Multicast Mode
	Launch the Wireless Conference Sharing settings.
 / 	Press Play to start the screen mirroring. Press Pause to pause the mirroring.
	Stop the screen mirroring.
 	Audio Slide bar to control the audio volume.

	Mute / Un-mute switch.
Login Code	The login code typed for connecting to the receiver.

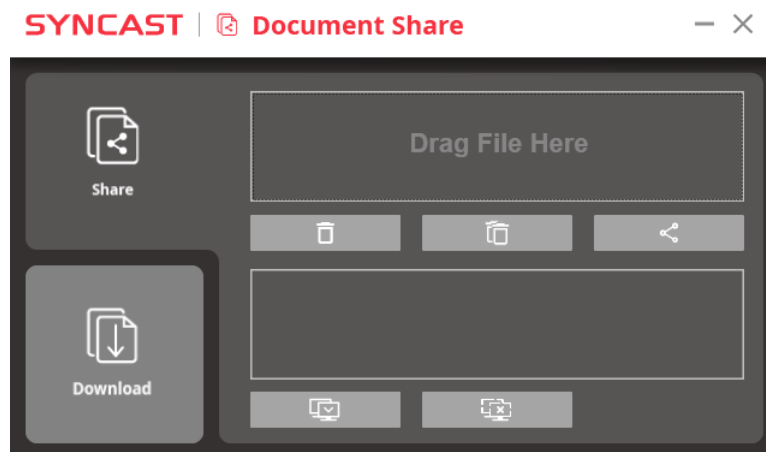
## Document Share

Windows PC and Mac can share files among each other with Document Share function.

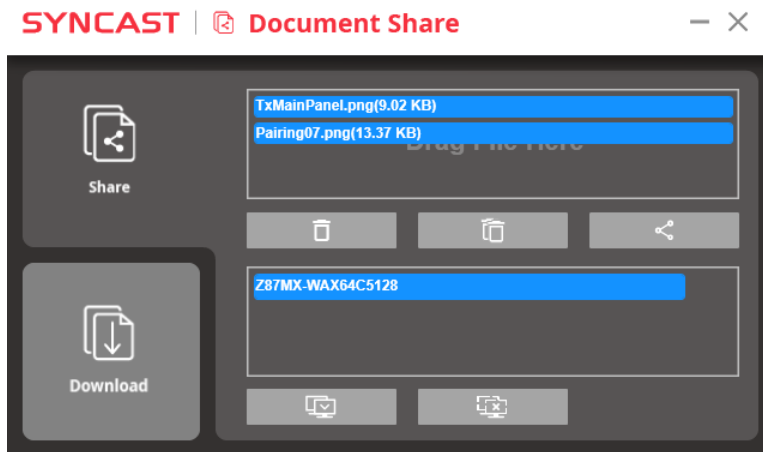
Click , the Document Share panel will show up.

### 1. Share the file

(1) Drag the file to the box.

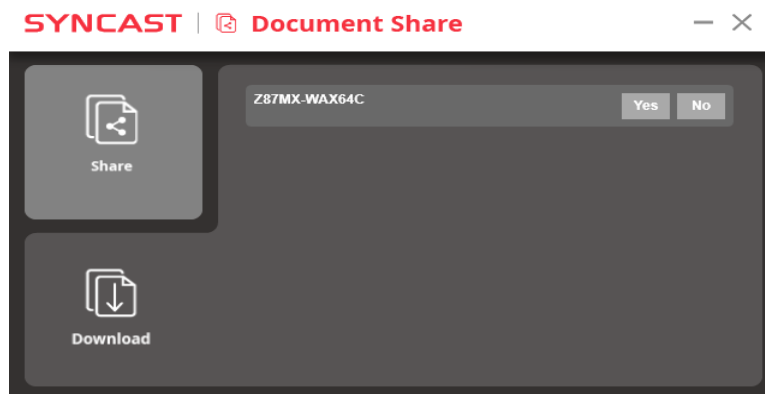


(2) Select other clients who can receive the file and click the “Share” button to start sharing.




## 2. Download the file


- (1) Go to “Download” pane to see the file which others share with you.
- (2) Select “Yes” to download the file or “No” to reject.





## Annotator

Click , the annotator will show on the left side of screen.

### 1. Main functions










Mode selection	Function Description
	Use the screen mode to draw. It will use a transparent layer over the mirroring screen to show the drawing.
	Use the sketch mode to draw. It will use a white plain layer over the mirroring screen to show the drawing.
	Exit the Annotator
In the screen mode	Function Description

	Save the drawing to the file.
	Pause the drawing, and back to the mirroring screen to use your PC.
	Discard any drawing and back to the mode selection.
In the sketch mode	Function Description
	Save the drawing to the file.
	Pause the drawing, and back to the mirroring screen to use your PC.
	Discard any drawing and back to the mode selection.


## 2. Drawing Tool Bar

Right click the mouse to launch the drawing tool bar. You should do the same command with mouse touchpad on touch screen. (Click behavior may be vary on each device.)



	Pen to draw the line.		Clean all drawing
	Light marker to draw to point out the important area.		Undo
	Text Box		Redo
	Shape Tool		Closethe drawing tool bar.
	Eraser to erase the drawing area		

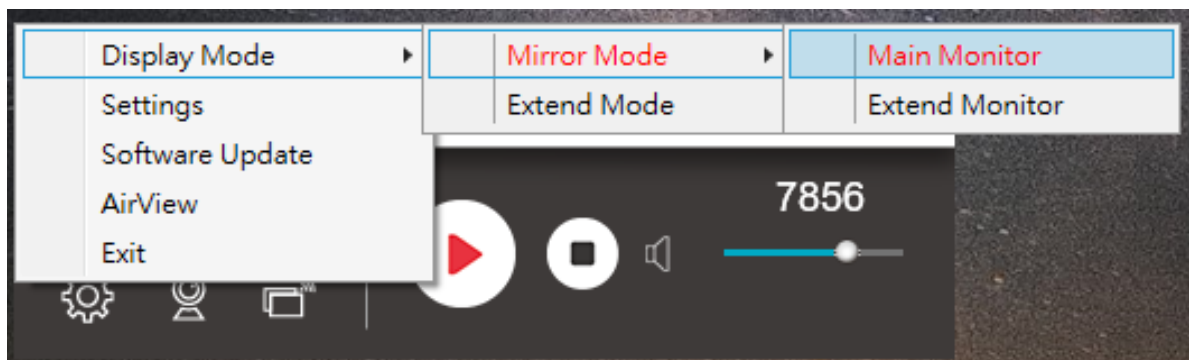
## Settings

Click  to see the setting menu.

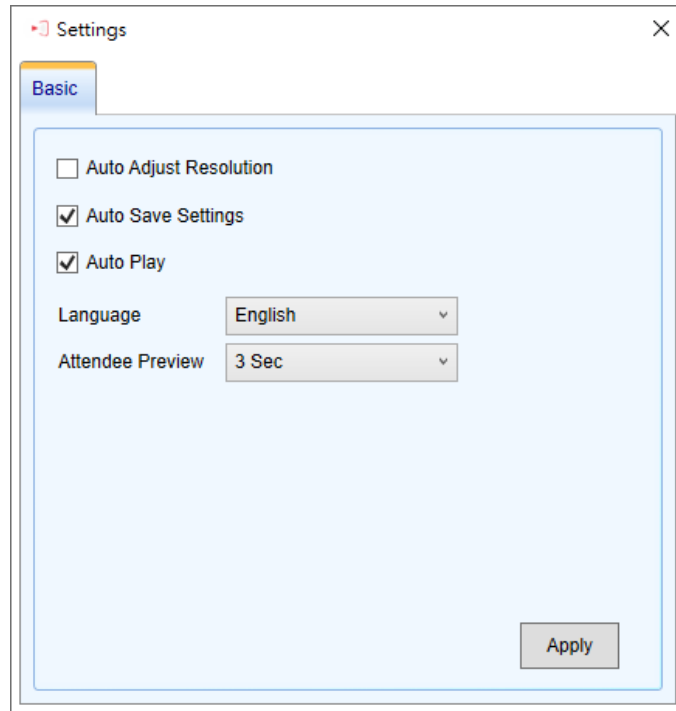


### 1. Display Mode

Mirror the current PC screen or share the extend screen. If there is another monitor connecting with the PC, you can choose to play the extend monitor.



## 2. Settings - SynCast advanced settings



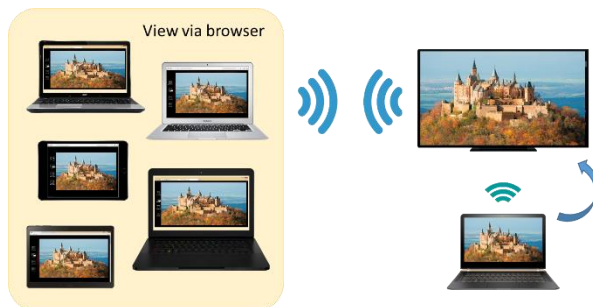
Item	Function Description
Auto Adjust Resolution	Set the Client PC to 1920x1080 then start screen mirroring.
Auto Save Settings	Save these settings automatically.
Auto Play	Start the screen mirroring automatically after connecting to the receiver.
Language	Select the SynCast application language. (Need to restart to apply change)
Attendee Preview	Set the period of Attendee List Preview update. Only effective when Conference Mode enabled.

### 3. Software Update

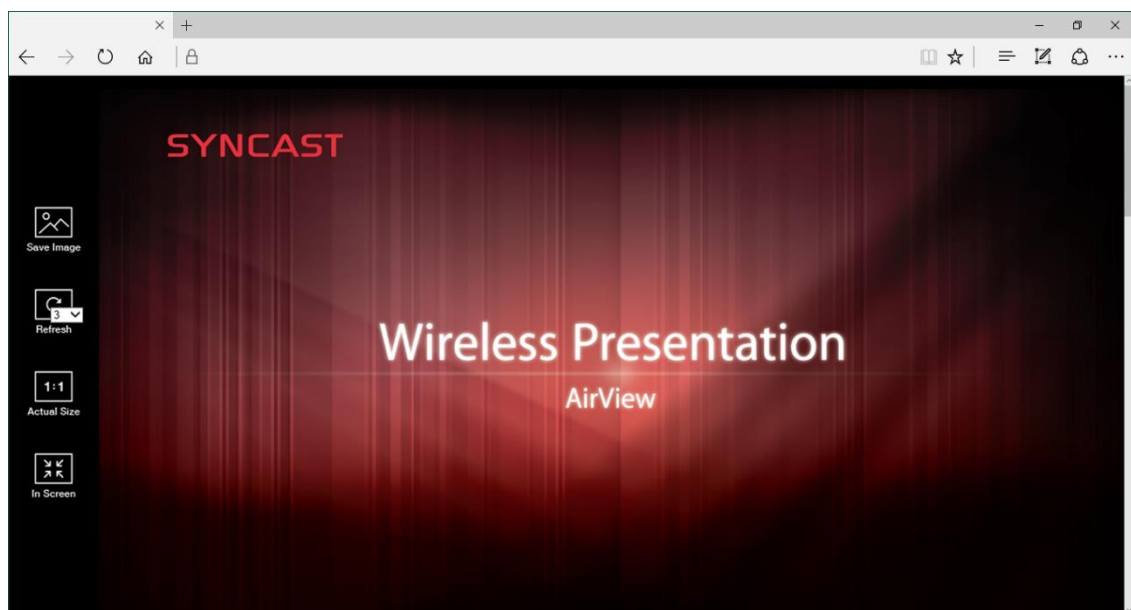
Will add in the future.

### 4. AirView

AirView is a slide show feature that clients can see the shared screen on the Receiver with browser. Good for clients faraway from display and take notes of the shared slides.



For client PCs doesn't install the SynCast software, they can also use the browser to see the slide show. Input the IP of the receiver and select AirView. Then watch the shared screen via browser temporarily.






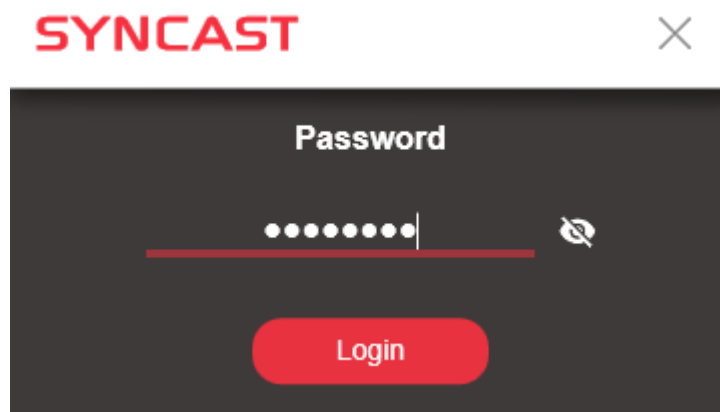
## 5. Exit

Close the SynCast software.

# Conference Mode

Conference Mode is a meeting control system that enables the meeting host as admin to organize the connected devices and select which screen to share and stop. If the admin doesn't choose the client which may not share the screen. Admin have the initiative to manage the shared screens.

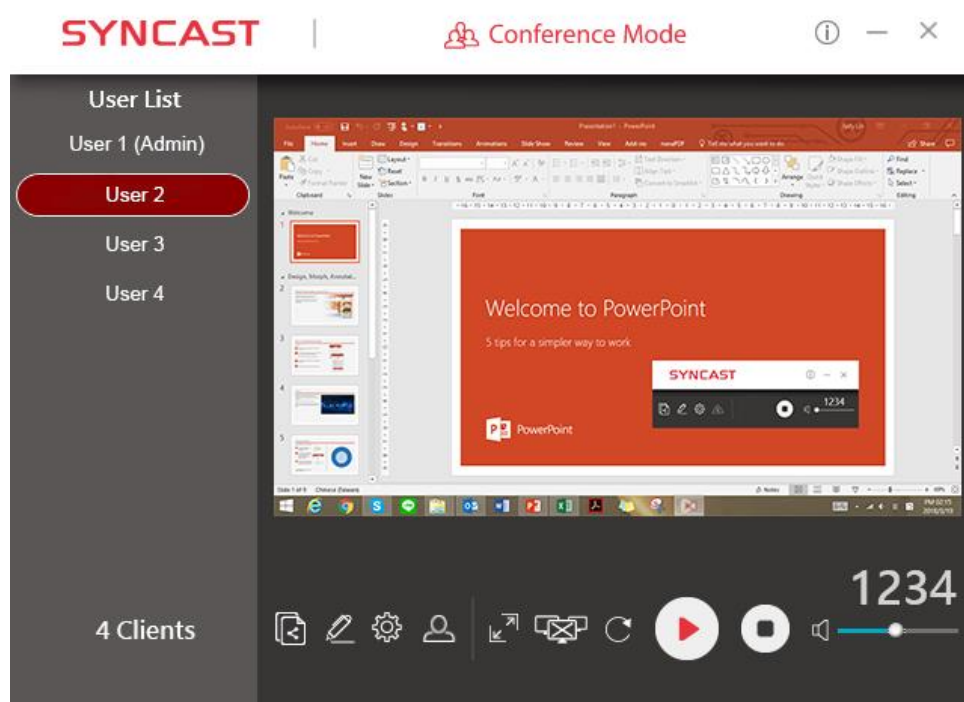
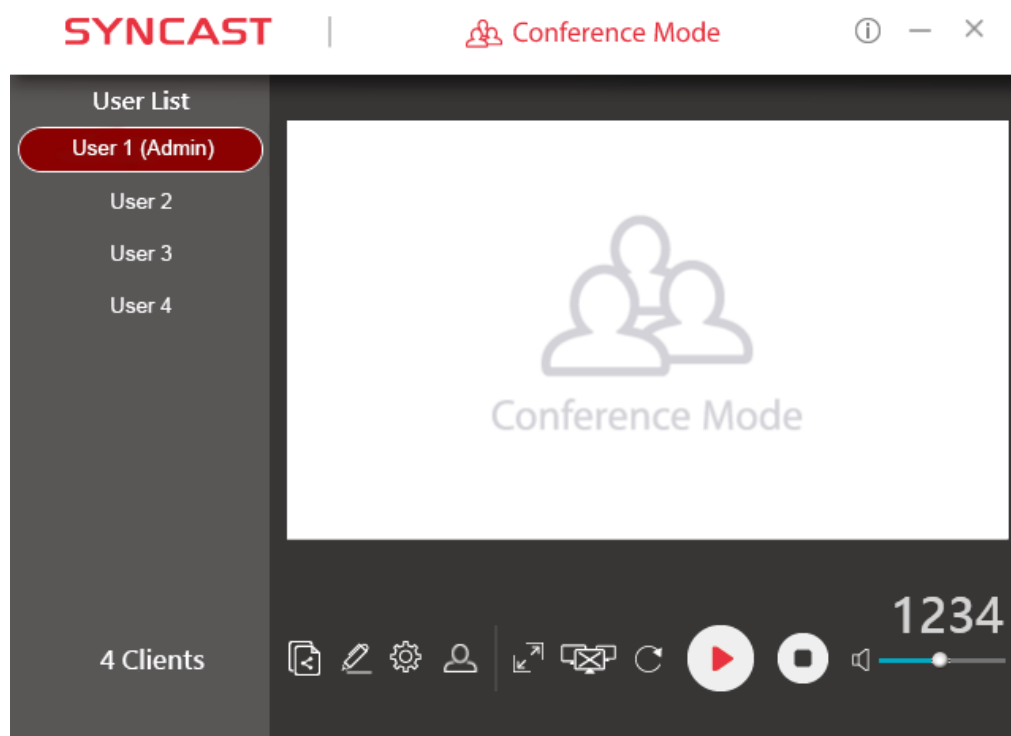
Click the  and input the conference password to switch to Conference Mode.  
The default password is “**adminpwd**”.










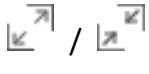






### Admin's Panel

Select a client to preview the screen.

Press Play button to let the selected client to share the screen.



Item	Description
	Click to show the Version / Server IP / Server Name / Radio Band
	Minimize the SynCast control panel
	Close the SynCast

User List	All clients PC (Admin included) and the counted number is shown below.
	Close the Conference Mode and back to the Basic Mode.
	Launch the Document Share
	Launch the Annotator
	Launch the SynCast setting
	Zoom In the split screen to the Full screen. Zoom Out the full screen to the original split screen size.
	Stop all clients' screen mirroring.
	Refresh the Admin Preview screen immediately.
	Press Play to start the screen mirroring. Press Play again to pause the mirroring.
	Stop the screen mirroring.
	Audio Slide bar to control the audio volume.
	Mute / Un-mute switch.
Login Code	The login code typed for connecting to the server.



### **Client's Panel**

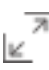
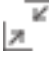

“Play” button is not available in Conference mode if Admin doesn't allow the client to share screen. Admin have the initiative to manage the clients to shared screens.

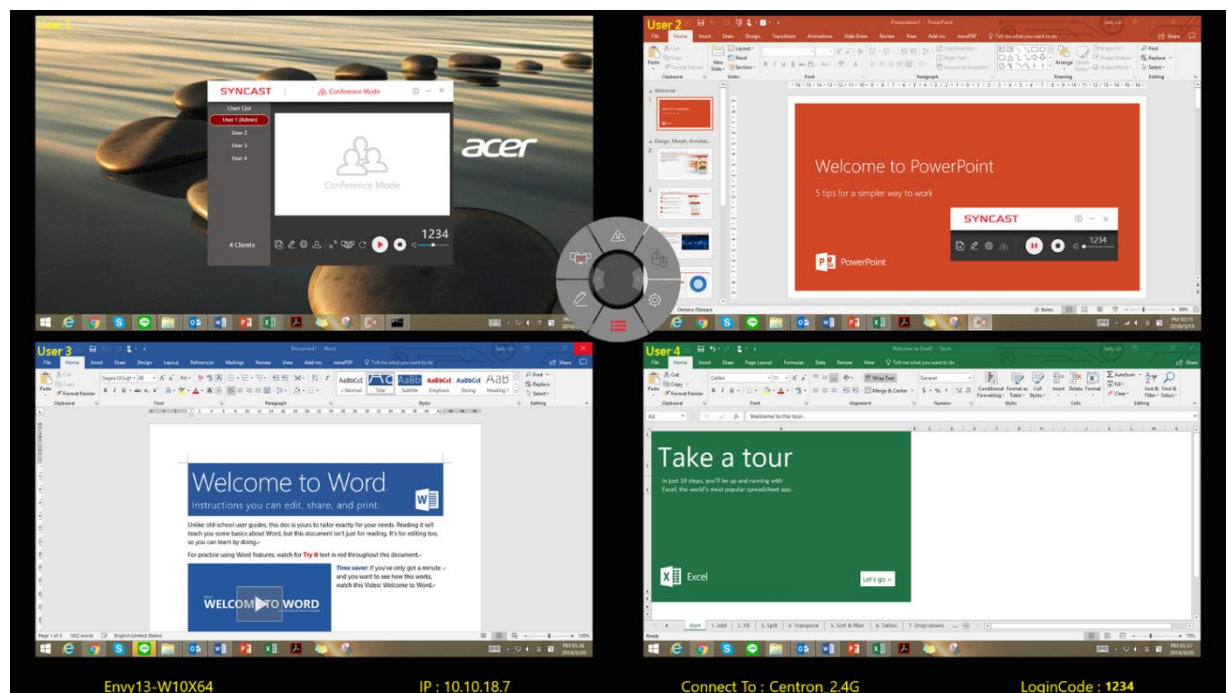


## Manage Multi-Screens Mirroring


SynCast Display supports 4 split-screen mirroring function. Admin can use SynCast Conference Mode panel to manage max 4 clients mirroring on the SynCast Display receiver.

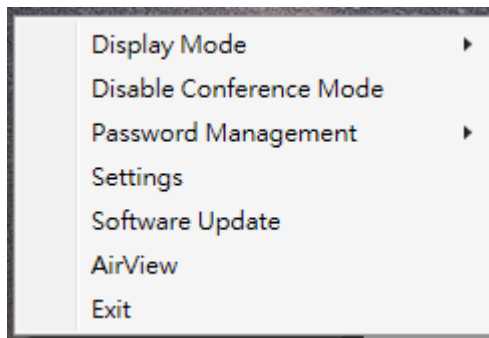
1. Select a client and press Play button to share the client's screen.
2. Add other clients to join in split screen.
3. Click  or  to Zoom In/Out the client screen.

Icon	Function Description
	Zoom In If the client is mirroring in split screen, click to zoom it to full screen mirroring.
	Zoom Out If the client is mirroring in full screen, click to zoom out to the original split screen size.
	Stop All Stop all the mirroring screens, no matter how many split screens are mirroring.



## Conference Mode Setting for Admin

Click  to see the setting menu.



Item	Description
Display Mode	Mirror the current PC screen or share the extend screen. If there is another monitor connecting with the PC, you can choose to play the extend monitor.
Disable Conference Mode	Click to close the Conference Mode and back to the Basic Mode.
Password Management	Change Password: Modify the Conference Mode password Reset Password: Reset the Conference Mode password to default "adminpwd"
Settings	SynCast advanced settings
Software Update	Will add in the future.
AirView	Open the browser to see the shared screen on the receiver. (Slide show)
Exit	Close the SynCast software.

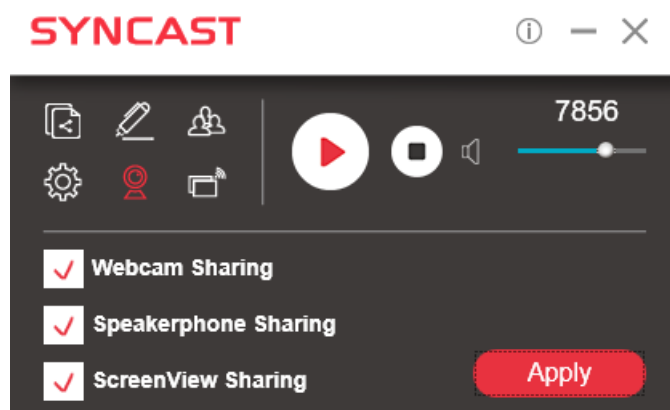
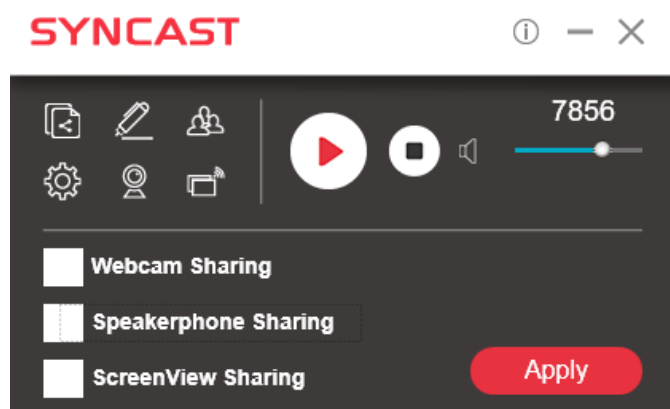
# Wireless Conference Mode

Wireless Conference Mode enables the client using the WebCAM and/or speakerphone connected in SynCast Display CT1820 remotely as if it is connected on the local computer. And grab the screenview shared on CT1820 to send to the conference joiners.

(1) Connect WebCAM with MJPEG support / speakerphone into the USB port of CT1820. These icons indicate that WebCAM / speakerphone is recognized by CT1820.

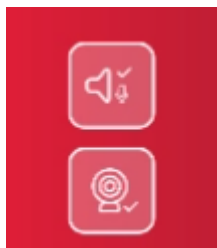
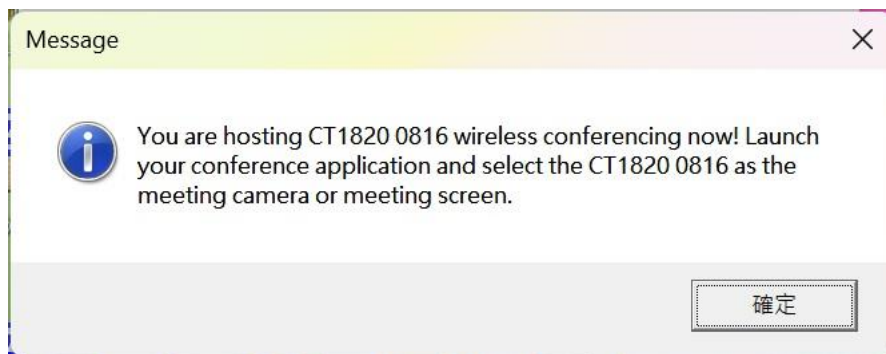


(2) At main panel of the basic mode, click  to open Wireless Conference Sharing settings.

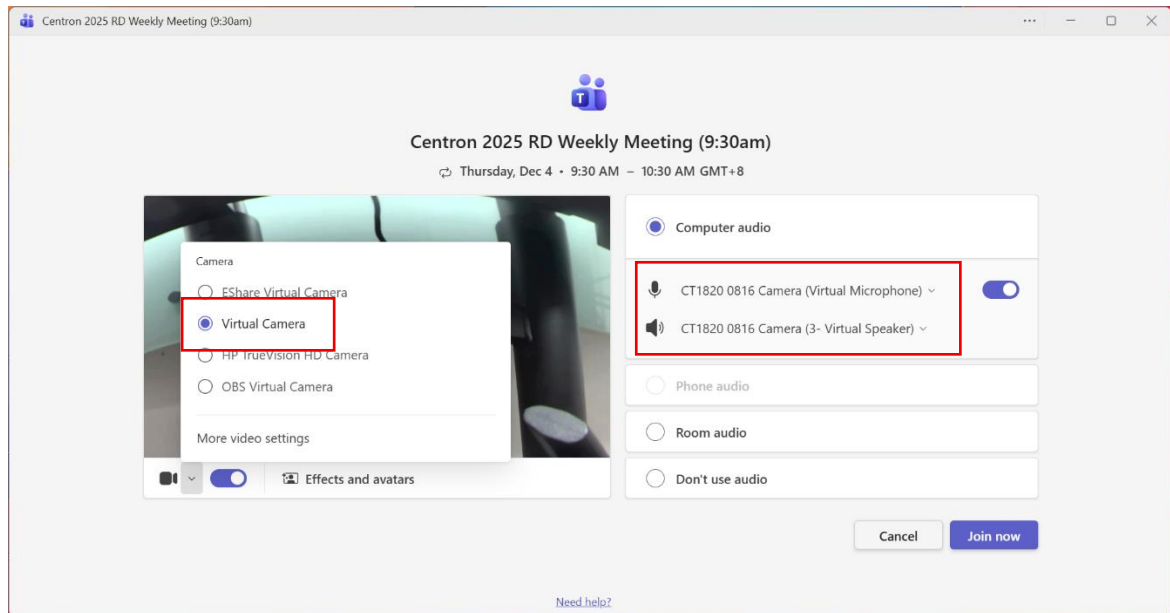


Only one client can use the WebCAM / speakerphone / screenview sharing. After checked the items click Apply to take effect.

(3) Here pops up the message to inform that we can use the WebCAM / speakerphone / screenview sharing in the meeting soft such as Skype / ZOOM / Google Meets.....And CT1820 will tell us which client is using WebCAM / speakerphone / screenview sharing.



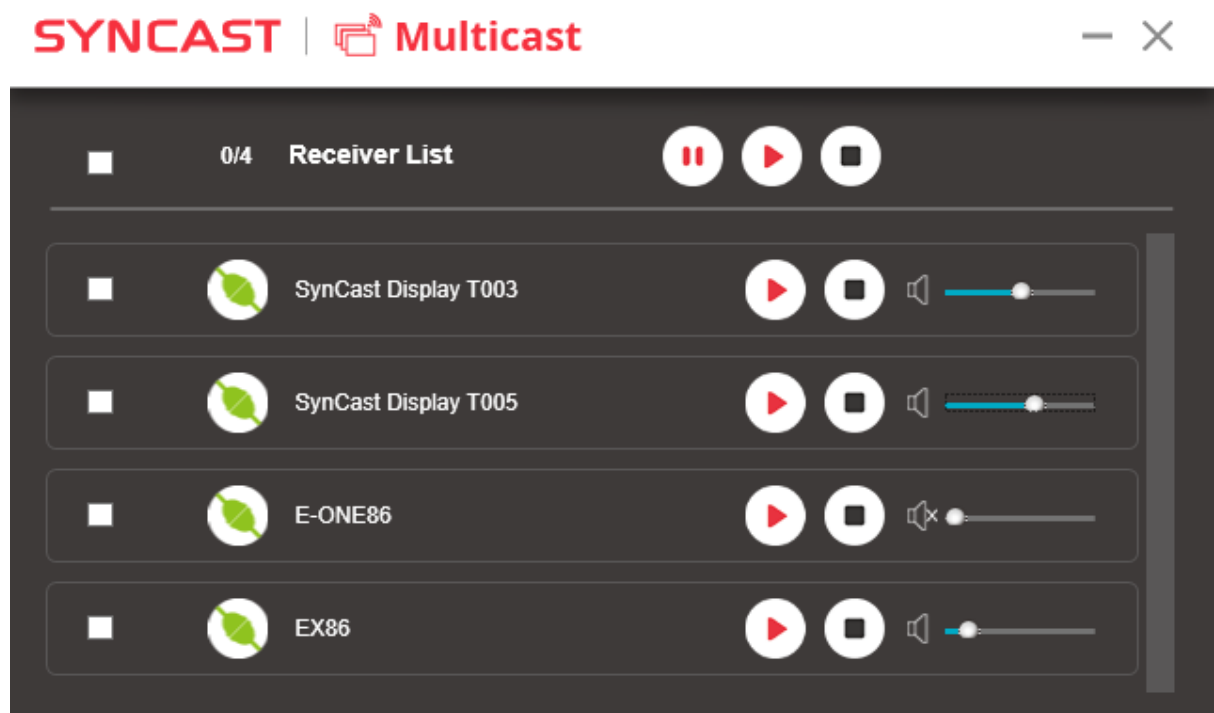
(4) Now we take Microsoft Teams for example to perform these steps. Here we can select the Virtual Camera (CT1820 Camera) and Virtual Microphone in Microsoft Teams.





# Multicast Mode

Multicast Mode enables the client finding the multiple CT1820s in the same network segment. And share the screen to these CT1820s at the same time.



Receiver List will show these CT1820s found in the same network segment. We can select them all and share the screen to all.

Alternatively, we can select several CT1820s by checking the check box. We can use the upper play button to share the screen to several CT1820s.