

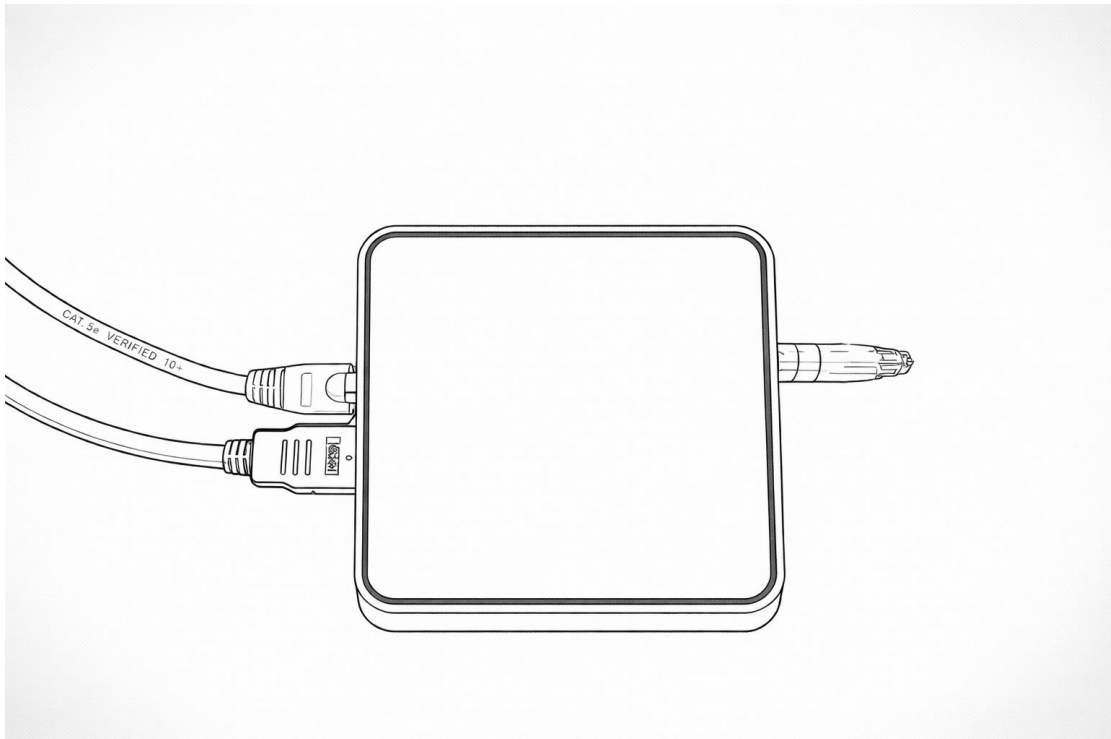
CENTRON DESIGN	Version : 1.0	Date : 2026/01/21
	Author : Derek	
	File Name : CT1820 _FW Update SOP	

Prerequisites:

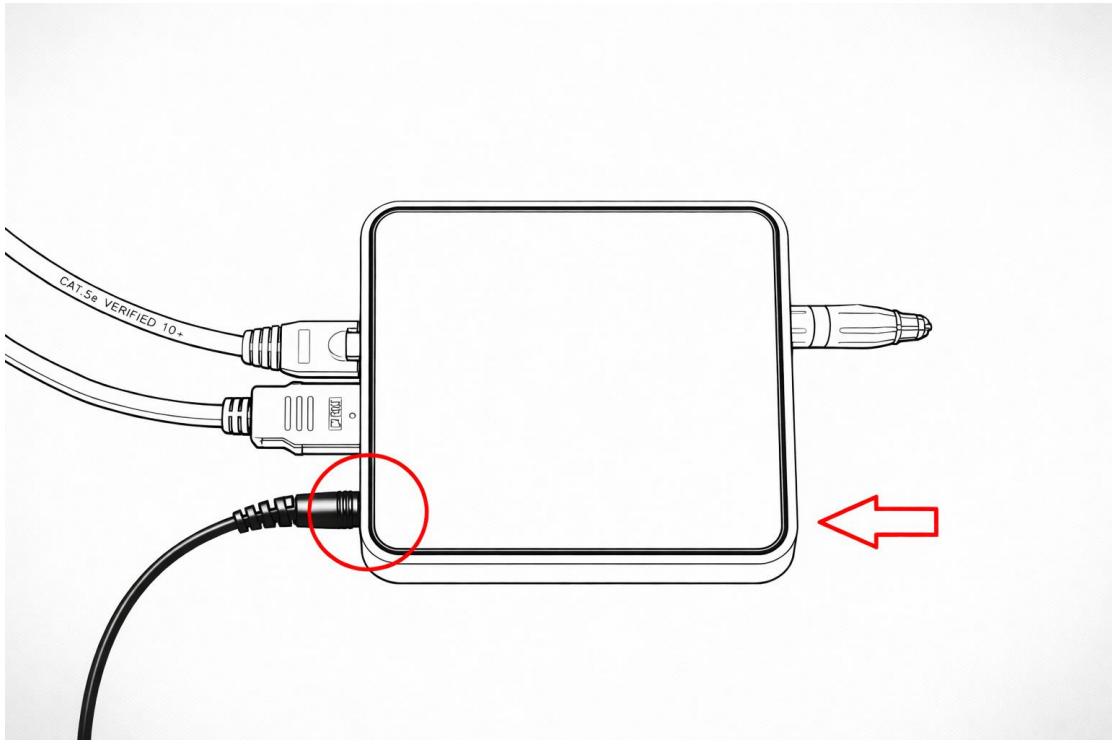
1. One display monitor.
2. An internet-connected network environment to access the license server and verify license activation.
3. A USB flash drive for the firmware update (place update.img in the root directory).
4. Ethernet cable.
5. CT1820 power cable.

Update Procedure

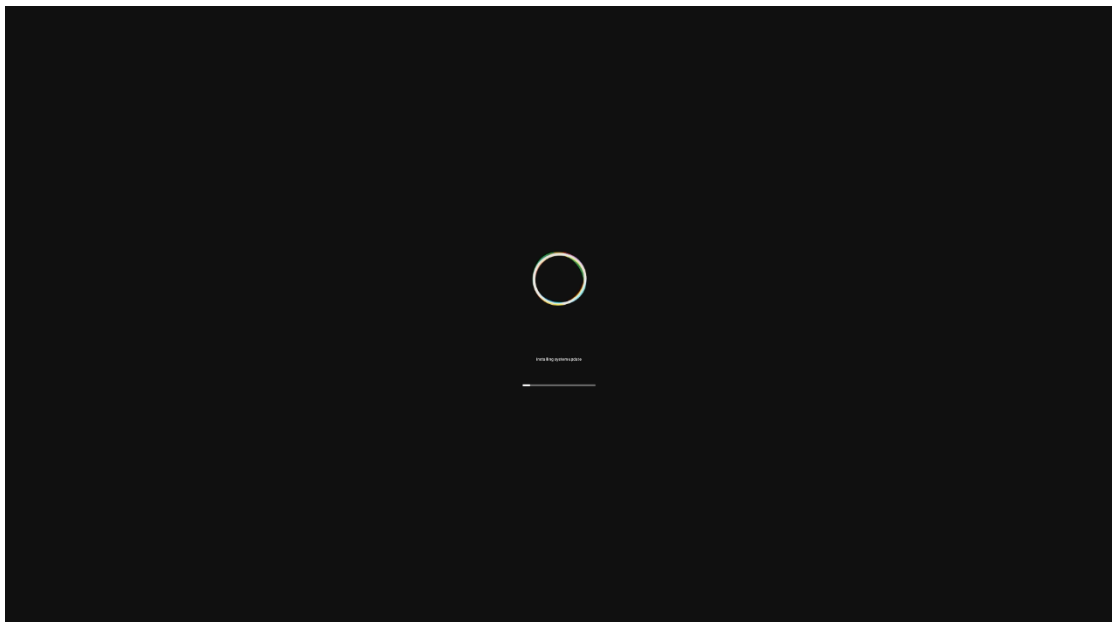
1. Connect the Ethernet cable, HDMI cable, and the USB flash drive containing the firmware to the CT1820.




2. Press and hold the front power button of the CT1820, then connect the power cable.

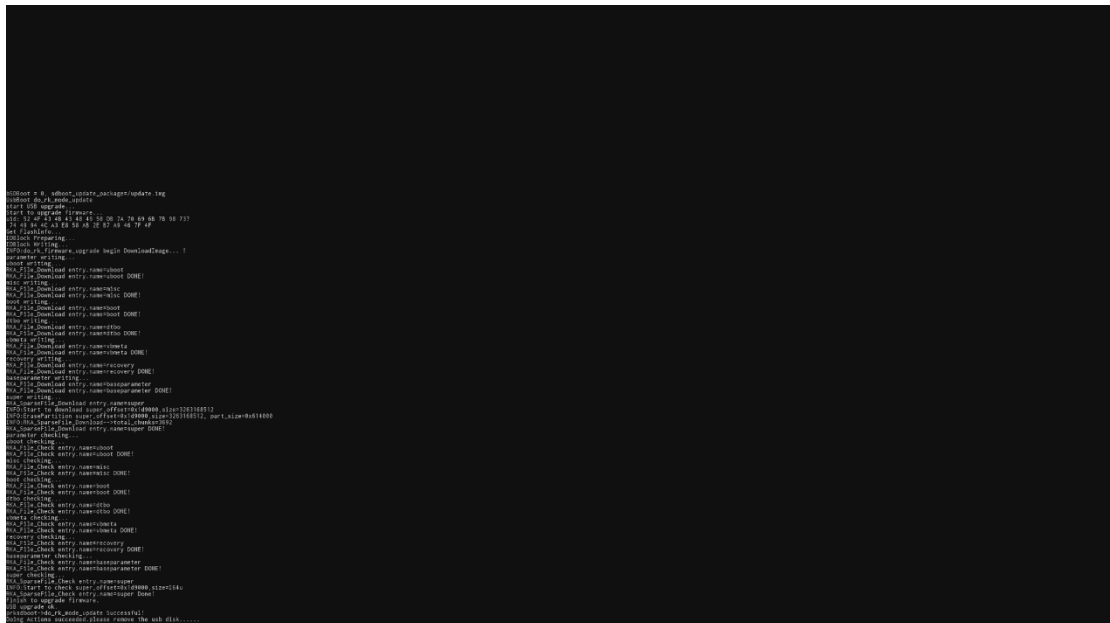


3. When this screen appears, the firmware update is in progress. You may release the power button.

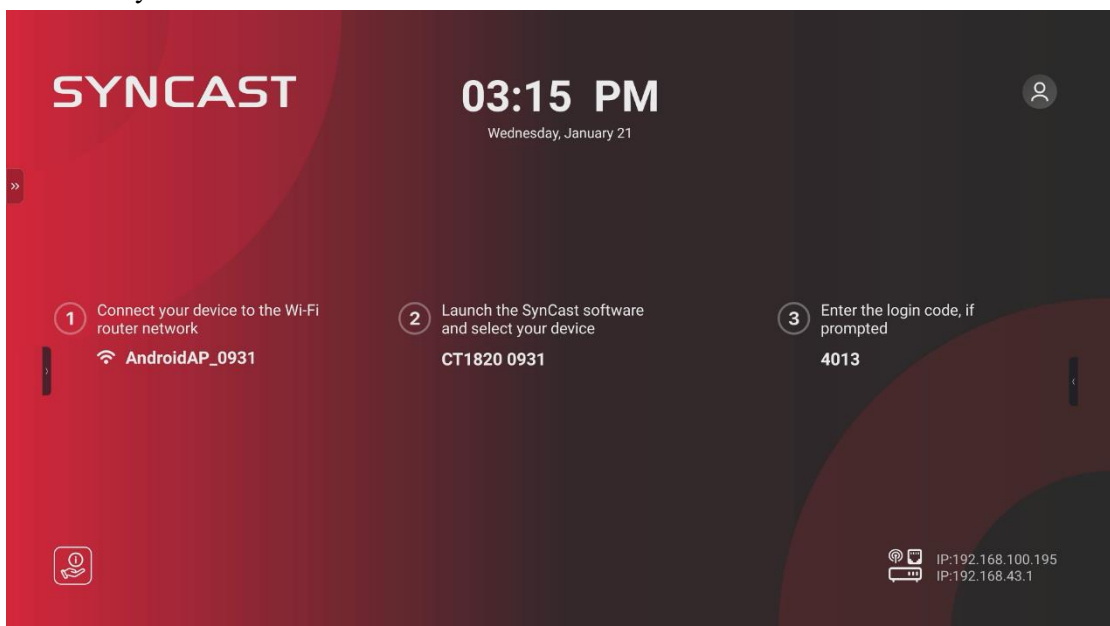


	Version : 1.0	Date : 2026/01/21
	Author : Derek	
	File Name : CT1820_FW Update SOP	

- When this screen appears, please remove the USB flash drive.



- When this screen appears, the firmware update is completed and the device has been successfully licensed via the license server.



CENTRON DESIGN	Version : 1.0	Date : 2026/01/21
	Author : Derek	
	File Name : CT1820 _FW Update SOP	

6. The updated version will be newer than the original one. The version shown in the example image is **1.2.8**.

